

# Florida Fire Service COVID-19 Staffing Impact

<b>Total Workforce Reporting</b>		<b>Fire Departments</b>		<b>Workforce Out</b>		<b>Total Positive to Date</b>
35,837	<i>From</i>	296	<i>With</i>	1,405	<i>And</i>	1,611

## Submissions by Region

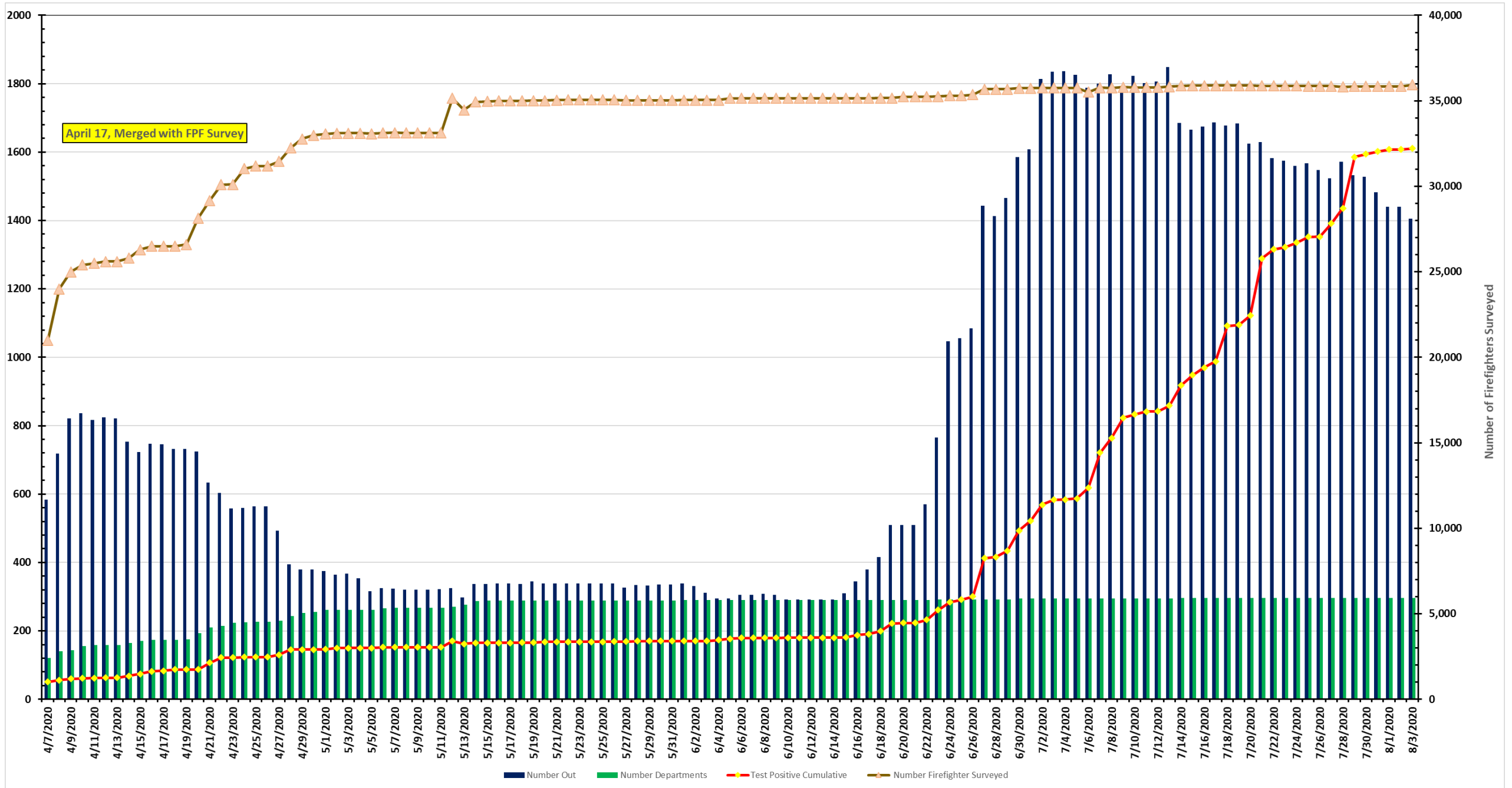
SERP Region	Workforce Total	Workforce Out	Total Positive	Total Submissions	% Out
1	2,005	59	53	55	2.94%
2	1,921	17	22	20	0.88%
3	4,159	104	162	25	2.50%
4	5,859	194	258	44	3.31%
5	7,403	179	361	57	2.42%
6	3,827	119	125	51	3.11%
7	10,663	733	630	44	6.87%
<b>Grand Total</b>	<b>35,837</b>	<b>1405</b>	<b>1611</b>	<b>296</b>	<b>3.92%</b>

Report For: 8/3/2020 8:53

# COVID -19



## JOINT DATA COLLECTION AND ANALYSIS



■ Number Out   
 ■ Number Departments   
 —●— Test Positive Cumulative   
 —▲— Number Firefighter Surveyed